



# DAEWON ELECTRIC

[www.e-daewon.co.kr](http://www.e-daewon.co.kr)

wellmade for your best choice  
DAEWON ELECTRIC CO.LTD.



# 대한민국 조명기구용 소켓·단자 대표브랜드 (주)대원전기

주식회사 대원전기는 각종 형광램프용 소켓, 풀스위치 및 다양한 단자를 생산하는 국내 최대, 최고의 조명기구용 소켓 전문 기업입니다.

형광 등기구 조립이 편리한 “슬림매직”등 소켓 개발에 주력해온 (주)대원전기는 신개념 ‘감전보호용 소켓’ 및 감전보호용 단자를 비롯하여 조명기구 업체가 보다 편리하고 안전하게 사용 할 수 있는 소켓 및 단자류를 추가 개발하는 등 국산 제품시장을 확고하게 지켜 나가기 위해 최선을 다하고 있습니다.

또한 (주)대원전기는 사출 금형 및 프레스 금형을 자체 개발 할 수 있는 시스템을 갖추고 있어 고객의 요구를 만족 할 수 있도록 최고의 기술진 및 임직원들이 최상의 제품을 공급하기 위해 노력하며 조명기구 소켓의 새로운 미래를 선도해 나가겠습니다.

(주)대원전기에서 제조하는 순수 대한민국 제품에 대한 고객 여러분의 지속적인 관심과 성원을 부탁드립니다.

감사합니다.

---

Welcome to Daewon Electric.

Daewon electric Corporation is the nation best company with the longest history in producing sockets in Korea.

Daewon has its own facility for Injection Mould with our own technology, which means we are capable of producing customized sockets to satisfy any requirements.

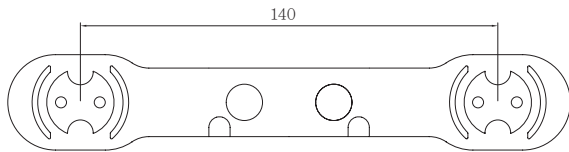
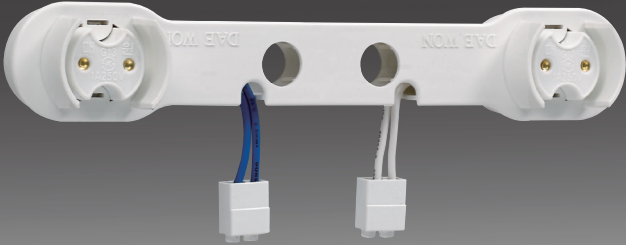
We are also equipped with advanced Press Die production system.

Under the very strict product control system, we promise all the products from Daewon are quality guaranteed products.

The whole staff in Daewon is always working on research and product development to go beyond our products.

Thank you.

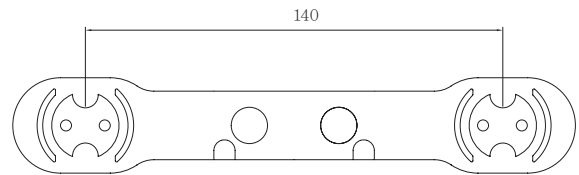
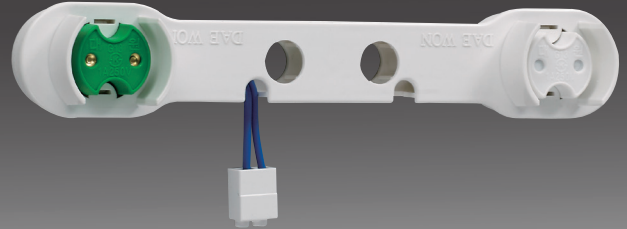
슬림매직 S-C



※ 유(油) 증기가 있는 장소에 사용금지

DF-001 형광램프용 일체형 소켓(스프링 타입) / 1A 250V

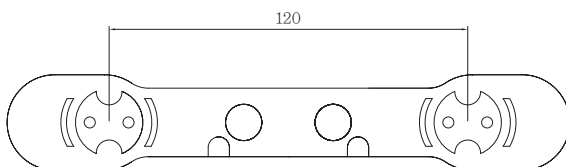
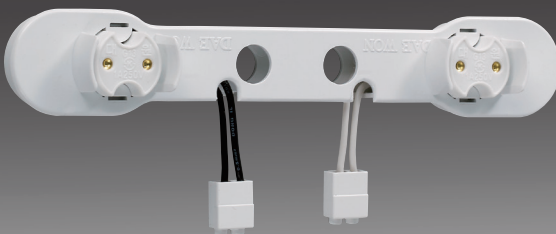
슬림매직 S-C (LED)



※ 유(油) 증기가 있는 장소에 사용금지

DF-002 형광램프용 일체형 소켓(LED용) / 1A 250V

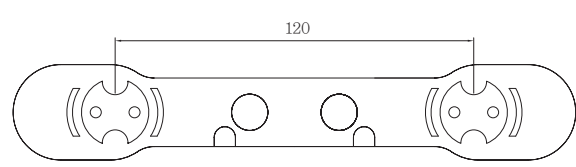
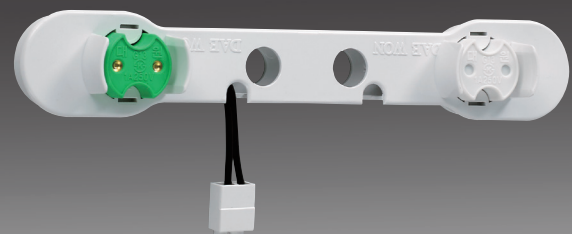
슬림매직 S1-C



※ 유(油) 증기가 있는 장소에 사용금지

DF-003 형광램프용 일체형 소켓(파라 보릭형) / 1A 250V

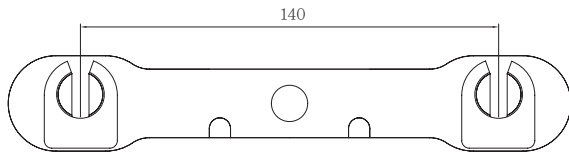
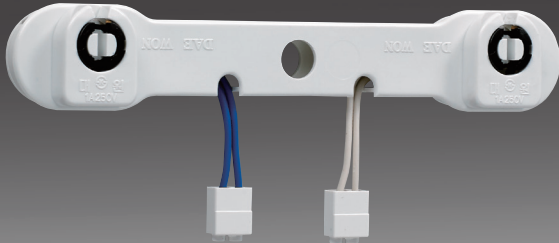
슬림매직 S1-C (LED)



※ 유(油) 증기가 있는 장소에 사용금지

DF-004 형광램프용 일체형 소켓(파라보릭LED용) / 1A 250V

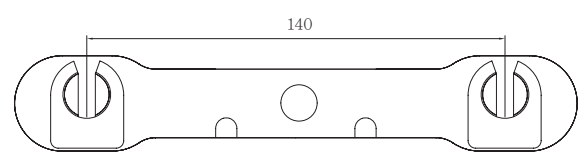
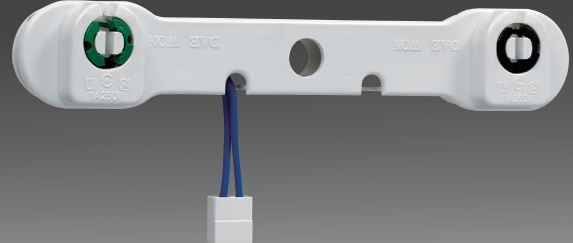
슬림매직 T-C



※ 유(油) 증기가 있는 장소에 사용금지

**DF-005** 형광램프용 일체형 소켓(회전 타입) / 1A 250V

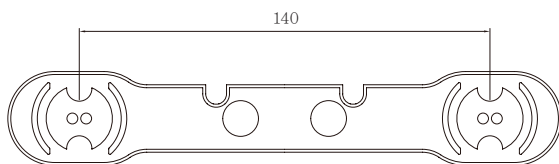
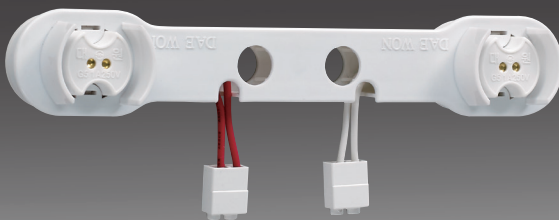
슬림매직 T-C (LED)



※ 유(油) 증기가 있는 장소에 사용금지

**DF-006** 형광램프용 일체형소켓(회전타입LED용) / 1A 250V

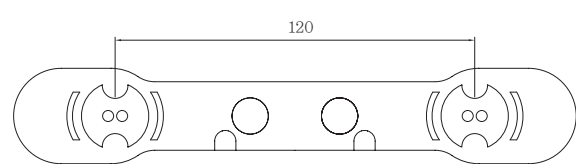
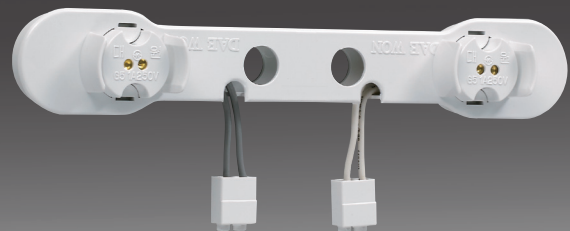
슬림매직 S-C (T5)



※ 유(油) 증기가 있는 장소에 사용금지

**DF-007** 형광램프용 일체형 소켓(스프링 타입) / 1A 250V

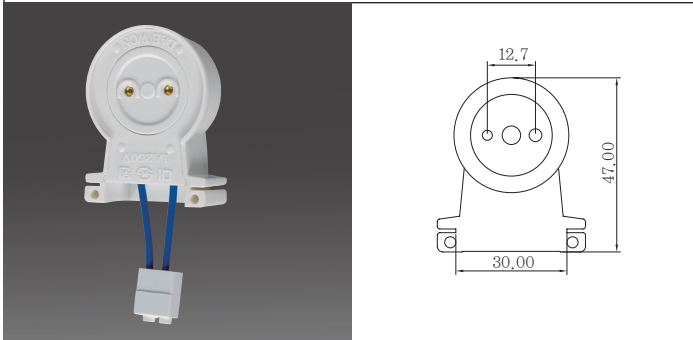
슬림매직 S1-C (T5)



※ 유(油) 증기가 있는 장소에 사용금지

**DF-008** 형광램프용 일체형 소켓 (파라 보릭형) / 1A 250V

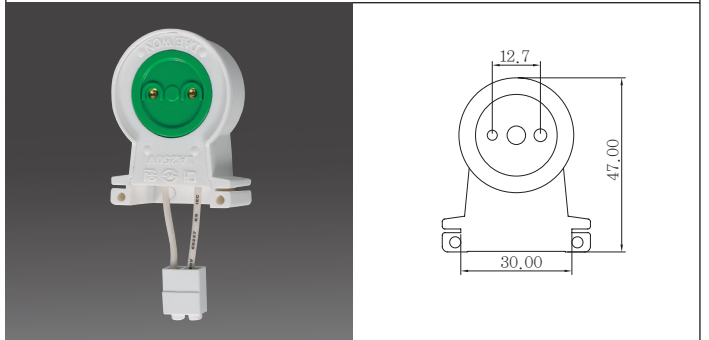
맞대기 S형-C



DF-1001

·형광램프용 소켓  
·1A 250V

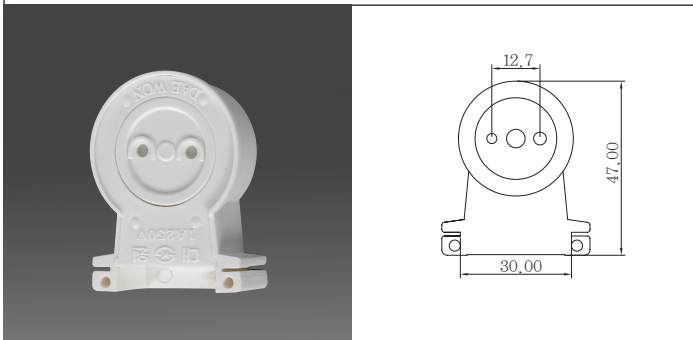
맞대기 S형-C (LED)



DF-1002

·형광램프용 소켓  
·1A 250V

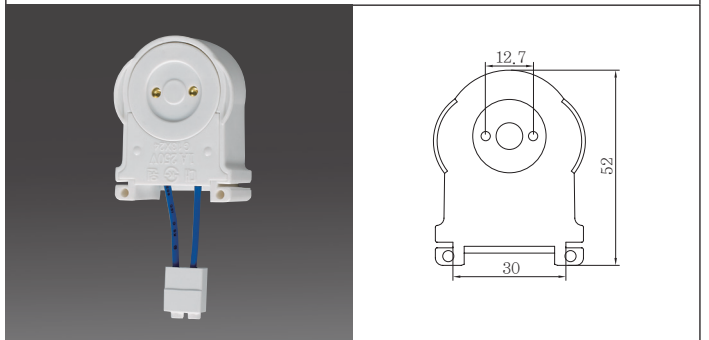
맞대기 S형 (LED무)



DF-1003

·형광램프용 소켓  
·1A 250V

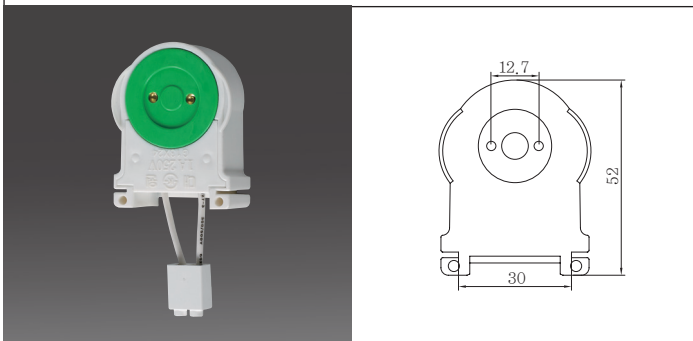
맞대기 A형-C



DF-1004

·형광램프용 소켓  
·1A 250V

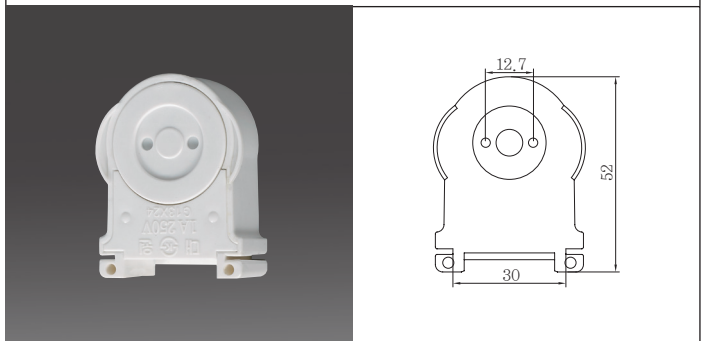
맞대기 A형-C (LED)



DF-1005

·형광램프용 소켓  
·1A 250V

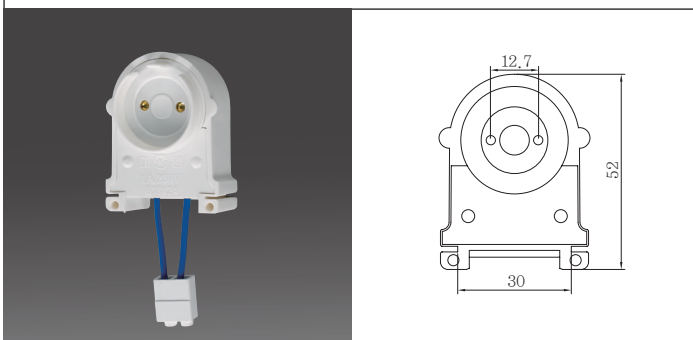
맞대기 A형 (LED무)



DF-1006

·형광램프용 소켓  
·1A 250V

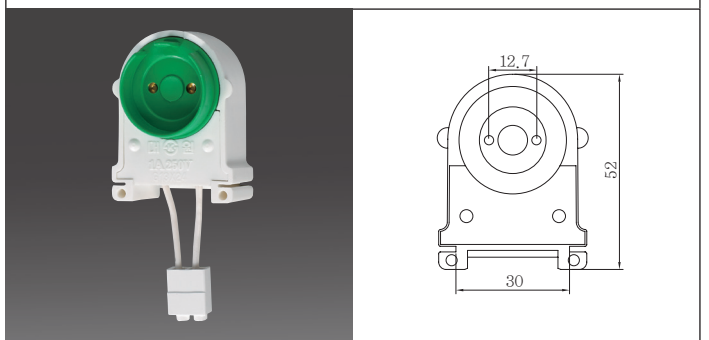
맞대기 A형-C (돌출형)



DF-1007

·형광램프용 소켓  
·1A 250V

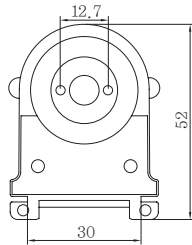
맞대기 A형-C (돌출형 LED)



DF-1008

·형광램프용 소켓  
·1A 250V

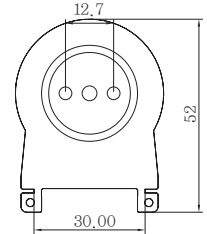
맞대기 A형 (돌출형 LED무)



DF-1009

·형광램프용 소켓  
·1A 250V

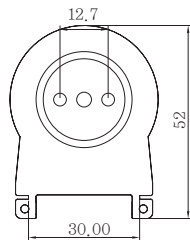
맞대기 K형-C



DF-1010

·형광램프용 소켓  
·1A 250V

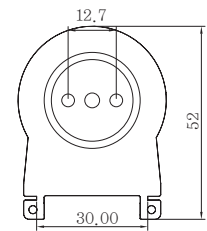
맞대기 K형-C (LED)



DF-1011

·형광램프용 소켓  
·1A 250V

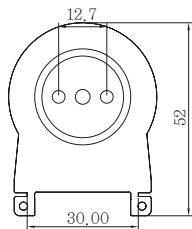
맞대기 K형 (꽃음형)



DF-1012

·형광램프용 소켓  
·1A 250V

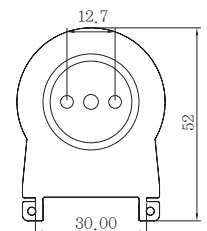
맞대기 K형 (꽃음형 LED)



DF-1013

·형광램프용 소켓  
·1A 250V

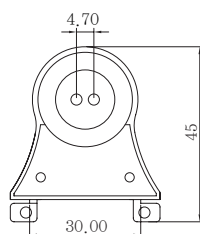
맞대기 K형 (LED무)



DF-1014

·형광램프용 소켓  
·1A 250V

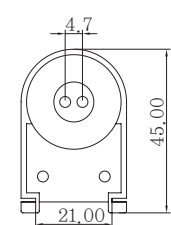
맞대기 G형-C (T5)



DF-1015

·형광램프용 소켓  
·1A 250V

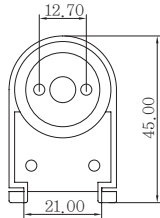
맞대기 I형-C (T5)



DF-1016

·형광램프용 소켓  
·1A 250V

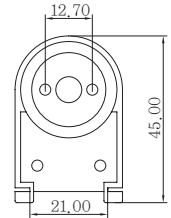
맞대기 I형 (LED)



DF-1017

·형광램프용 소켓  
·1A 250V

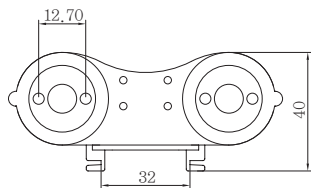
맞대기 I형 (LED무)



DF-1018

·형광램프용 소켓  
·1A 250V

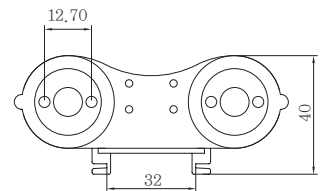
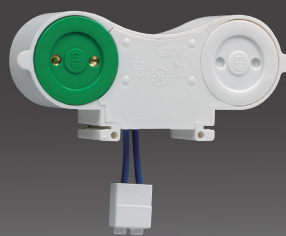
32Wx2 갓등용-C



DF-1019

·형광램프용 소켓(일체형)  
·1A 250V

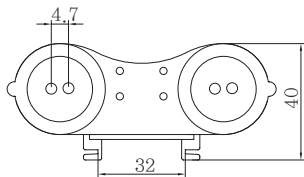
32Wx2 갓등용-C (LED)



DF-1020

·형광램프용 소켓(일체형)  
·1A 250V

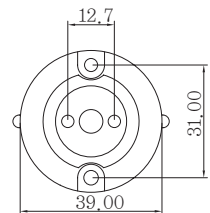
28Wx2 갓등용-C (T5)



DF-1021

·형광램프용 소켓(일체형)  
·1A 250V

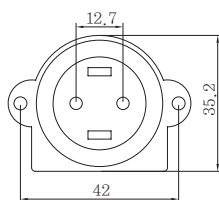
맞대기 E형-C



DF-1022

·형광램프용 소켓  
·1A 250V

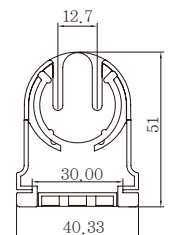
맞대기 H형-C (LED 철도차량용)



DF-1023

·형광램프용 소켓  
·1A 250V

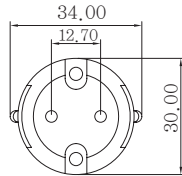
맞대기(삽입) H형 (철도차량용)



DF-1024

·형광램프용 소켓  
·1A 250V

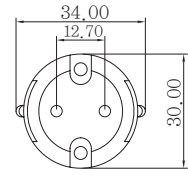
맞대기형 OSP-C



DF-1025

·형광램프용 소켓  
·1A 250V

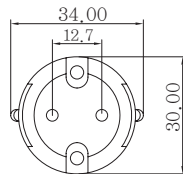
맞대기형 OSP-C (LED)



DF-1026

·형광램프용 소켓  
·1A 250V

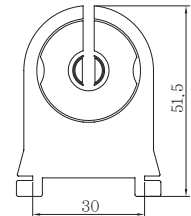
맞대기형 OSP (LED무)



DF-1027

·형광램프용 소켓  
·1A 250V

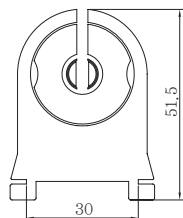
맞대기 EF-C (LED)



DF-1028

·형광램프용 소켓(삽입형)  
·1A 250V

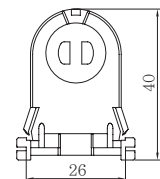
맞대기 EF (LED무)



DF-1029

·형광램프용 소켓(삽입형)  
·1A 250V

삽입 E형-C

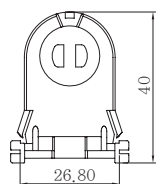


DF-1030

※ 유(油) 증기가 있는 장소에 사용금지

·형광램프용 소켓(삽입형)  
·1A 250V

삽입 E형-C (LED)

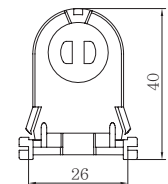


DF-1031

※ 유(油) 증기가 있는 장소에 사용금지

·형광램프용 소켓(삽입형)  
·1A 250V

삽입 E형 (꽃음용, LED무겸용)

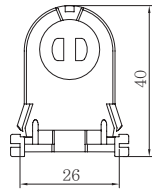


DF-1032

※ 유(油) 증기가 있는 장소에 사용금지

·형광램프용 소켓(삽입형)  
·1A 250V

삽입 E형(꽃음용LED)

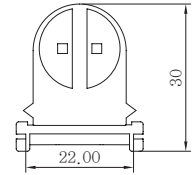


※ 유(油) 증기가 있는 장소에 사용금지

DF-1033

·형광램프용 소켓(삽입형)  
·1A 250V

삽입형 T5(나사고정용)

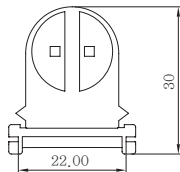


※ 유(油) 증기가 있는 장소에 사용금지

DF-1034

·형광램프용 소켓(삽입형)  
·1A 250V

삽입형 T5

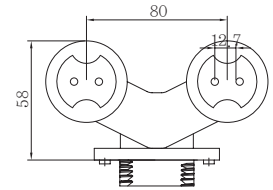


※ 유(油) 증기가 있는 장소에 사용금지

DF-1035

·형광램프용 소켓(삽입형)  
·1A 250V

32Wx2 MDF-C(LED)

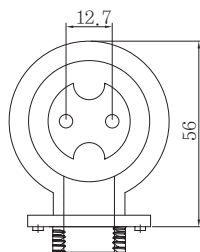


※ 유(油) 증기가 있는 장소에 사용금지

DF-1036

·형광램프용 소켓  
·1A 250V

32Wx1 MDF-C(LED)

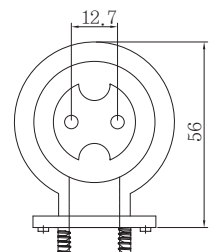


※ 유(油) 증기가 있는 장소에 사용금지

DF-1037

·형광램프용 소켓  
·1A 250V

32Wx1 MDF(LED무)

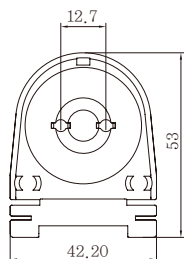


※ 유(油) 증기가 있는 장소에 사용금지

DF-1038

·형광램프용 소켓  
·1A 250V

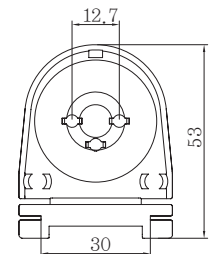
수출용 소켓 (2Pin)



·형광램프용 소켓  
·1A 250V

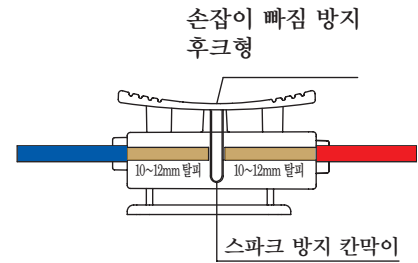
DF-1039

수출용 소켓 (3Pin)



·형광램프용 소켓  
·1A 250V

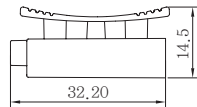
DF-1040



※ 도선 연결 단자대 (도선 탈피길이 10~12mm)

※ 유(油) 증기가 있는 장소에 사용금지

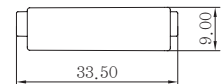
1P단자 (누름형)



DW-5001

·선고정 단자  
·6A 250V

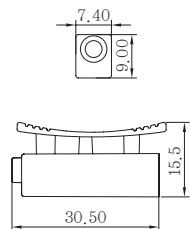
1P단자 H형 (LED)



DW-5002

·선고정 단자  
·6A 250V

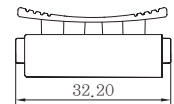
1P단자 (1구누름형) 센서·직부용



DW-5003

·선고정 단자  
·6A 250V

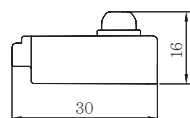
1P단자 (LED)



DW-5004

·선고정 단자  
·6A 250V

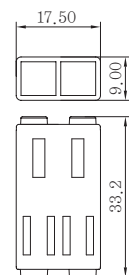
1P단자-E (나사형)



DW-5005

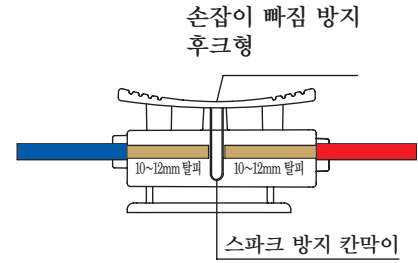
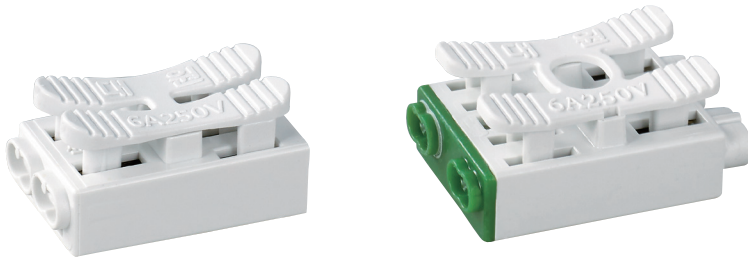
·선고정 단자  
·6A 250V

2P단자 H형 (LED) 센서·직부용



DW-5006

·선고정 단자  
·6A 250V



※ 도선 연결 단자대 (도선 탈피길이 10~12mm)

※ 유(油) 증기가 있는 장소에 사용금지

2P단자-G형

DW-5007

- 선고정 단자
- 6A 250V

2P단자-H형

DW-5008

- 선고정 단자
- 6A 250V

2P단자-G (S형)

DW-5009

- 선고정 단자
- 6A 250V

2P단자-H (S형)

DW-5010

- 선고정 단자
- 6A 250V

2P단자-H (S형 1구) 센서·직부용

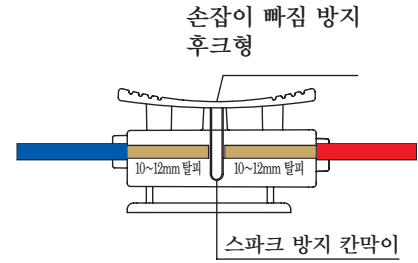
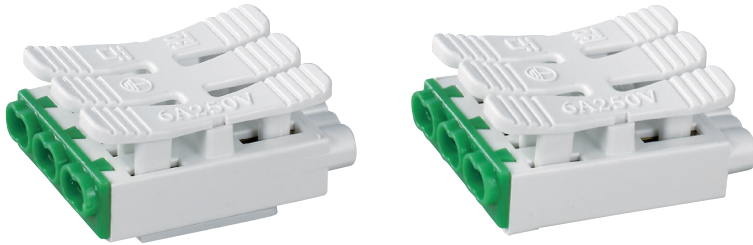
DW-5011

- 선고정 단자
- 6A 250V

2P단자-G형(LED)

DW-5012

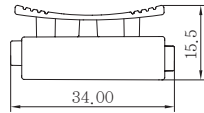
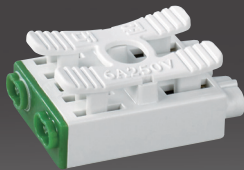
- 선고정 단자
- 6A 250V



※ 도선 연결 단자대 (도선 탈피길이 10~12mm)

※ 유(油) 증기가 있는 장소에 사용금지

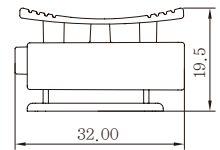
2P단자-H형(LED)



DW-5013

·선고정 단자  
·6A 250V

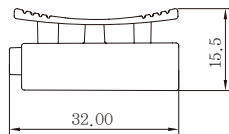
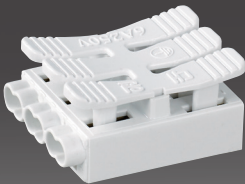
3P단자-A (누름형)



DW-5014

·선고정 단자  
·6A 250V

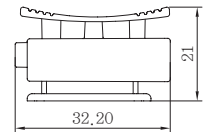
3P단자-H (누름형)



DW-5015

·선고정 단자  
·6A 250V

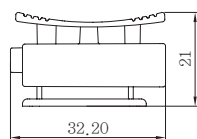
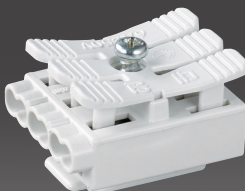
2P단자-B접지①



DW-5016

·선고정 단자  
·6A 250V

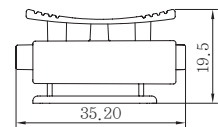
2P단자-B접지②



DW-5017

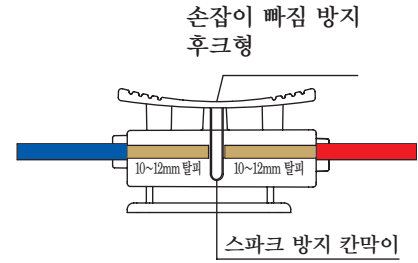
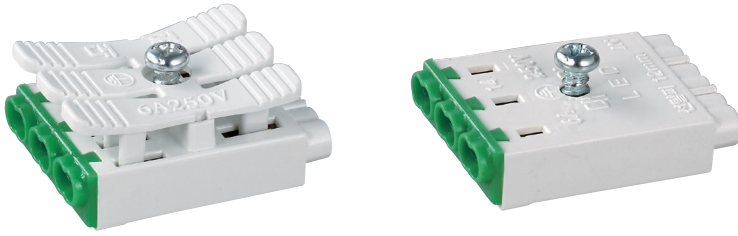
·선고정 단자  
·6A 250V

2P단자-B접지①(LED)



DW-5018

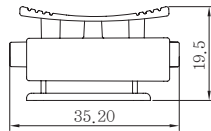
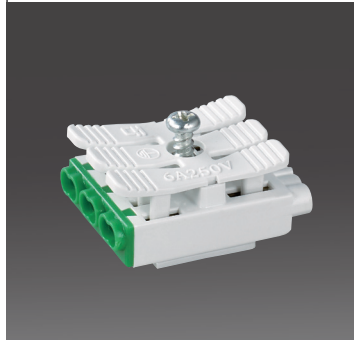
·선고정 단자  
·6A 250V



※ 도선 연결 단자대 (도선 탈피길이 10~12mm)

※ 유(油) 증기가 있는 장소에 사용금지

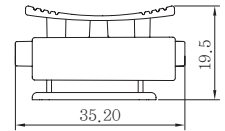
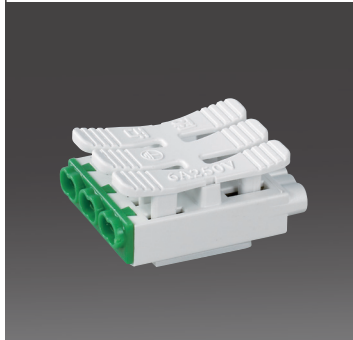
2P단자-B접지②(LED)



DW-5019

·선고정 단자  
·6A 250V

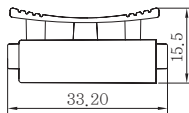
3P단자-A(LED)



DW-5020

·선고정 단자  
·6A 250V

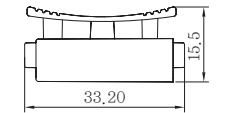
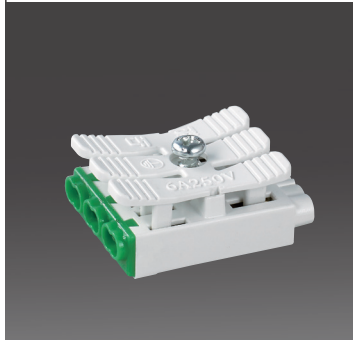
3P단자-H(LED)



DW-5021

·선고정 단자  
·6A 250V

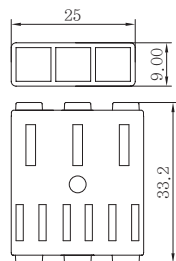
2P단자-H접지(LED)



DW-5022

·선고정 단자  
·6A 250V

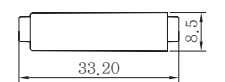
2P단자-H1접지(LED)



DW-5023

·선고정 단자  
·6A 250V

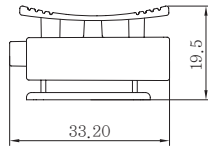
3P단자-H1(LED)



DW-5024

·선고정 단자  
·6A 250V

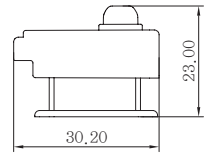
3P단자-A 접지



DW-5025

·선고정 단자  
·6A 250V

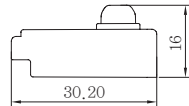
2P단자-E (나사형)



DW-5026

·선고정 단자  
·6A 250V

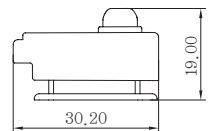
2P단자-F (나사형)



DW-5027

·선고정 단자  
·6A 250V

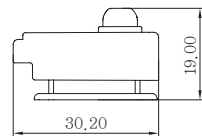
2P단자-F접지 (나사형)



DW-5028

·선고정 단자  
·6A 250V

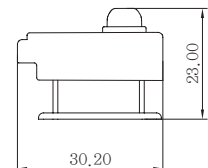
2P단자-F접지 LED (나사형)



DW-5029

·선고정 단자  
·6A 250V

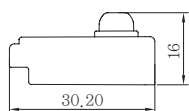
3P단자-E (나사형)



DW-5030

·선고정 단자  
·6A 250V

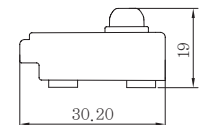
3P단자-F (나사형)



DW-5031

·선고정 단자  
·6A 250V

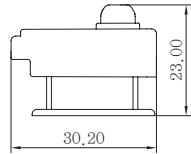
3P단자-F접지 (나사형)



DW-5032

·선고정 단자  
·6A 250V

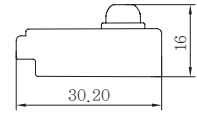
4P단자-E (나사형)



DW-5033

·선고정 단자  
·6A 250V

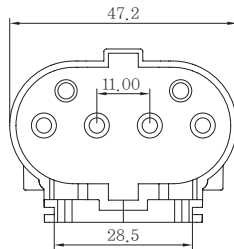
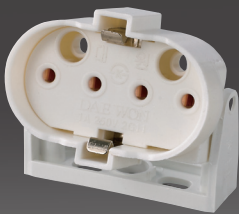
4P단자-F (나사형)



DW-5034

·선고정 단자  
·6A 250V

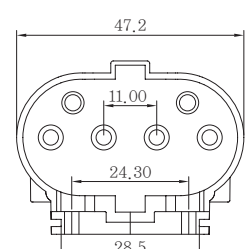
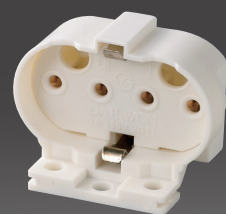
FPL36W-A형



DF-1041

·FPL램프용 소켓  
·1A 250V

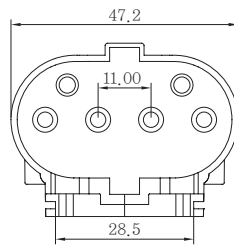
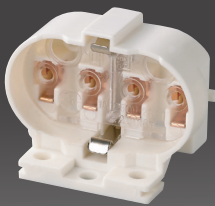
FPL36W-B형



DF-1042

·FPL램프용 소켓  
·1A 250V

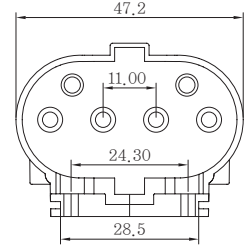
FPL36W-B형 (투명)



DF-1043

·FPL램프용 소켓  
·1A 250V

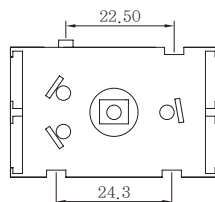
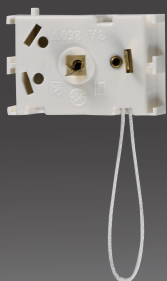
FPL36W-B형 (나사용)



DF-1044

·FPL램프용 소켓  
·1A 250V

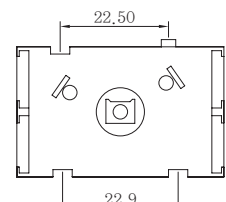
풀스위치 (2단)



DS-1001

·풀 S/W 2단너트(1/8x8)  
·3A 250V

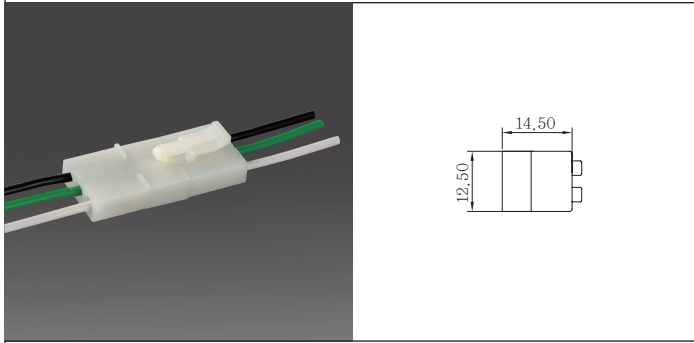
풀스위치 (3단)



DS-1002

·풀 S/W 3단너트(1/8x8)  
·3A 250V

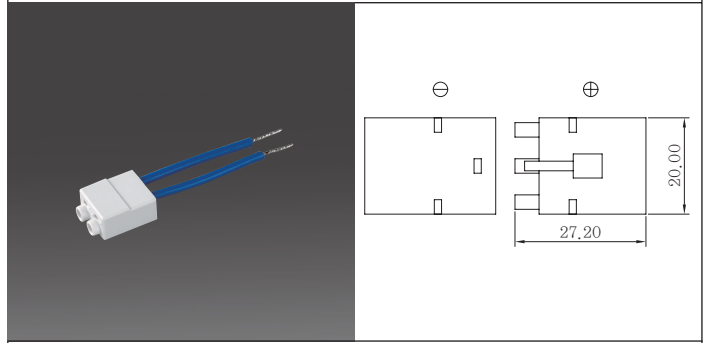
3P하우징



DC-1001

·모든 소켓적용 (다용도 연결잭)  
·1A 250V

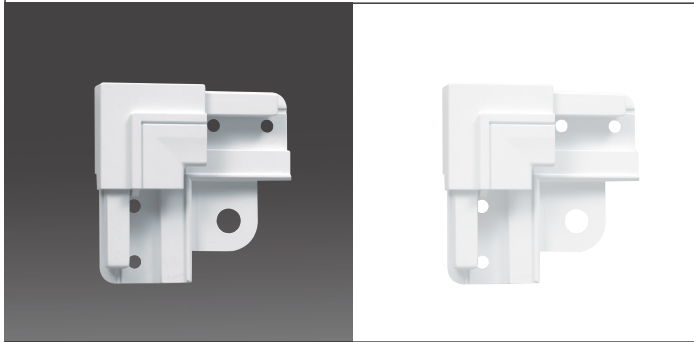
연결잭



DC-1002

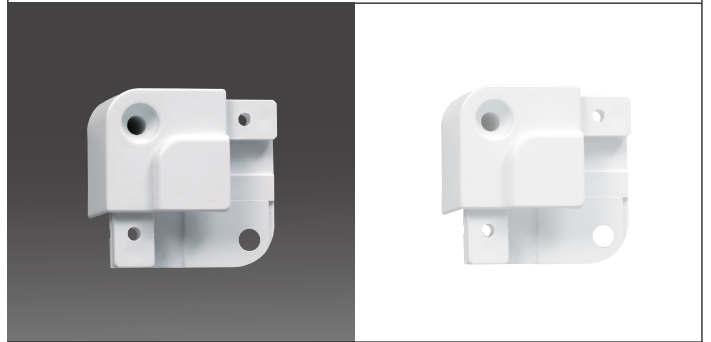
·1A 250V

엣지 (대)



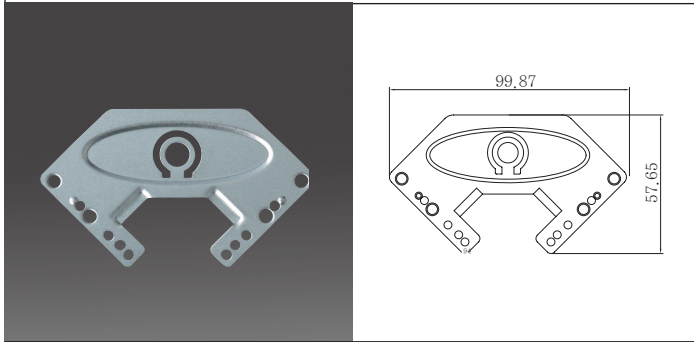
DR-6001

엣지 (소)



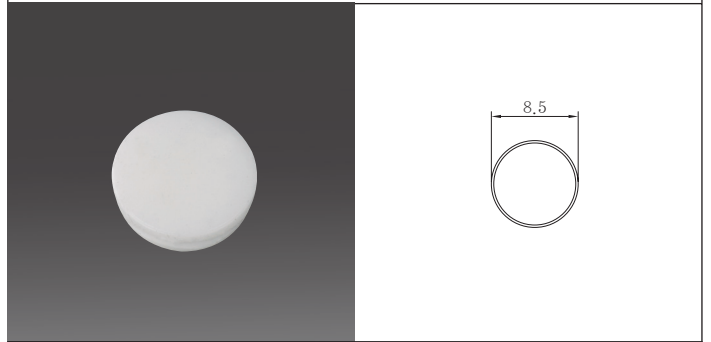
DR-6002

엣지 가나구



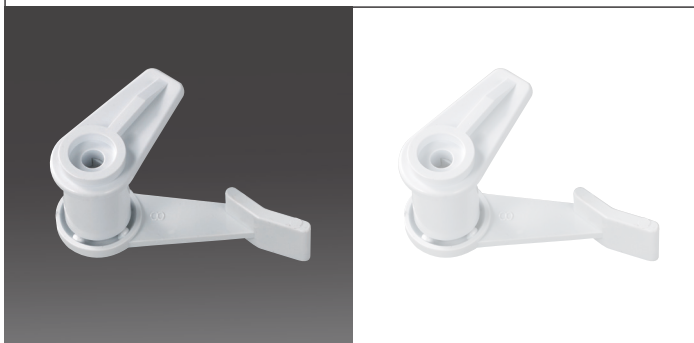
DR-6003

엣지 나사마개



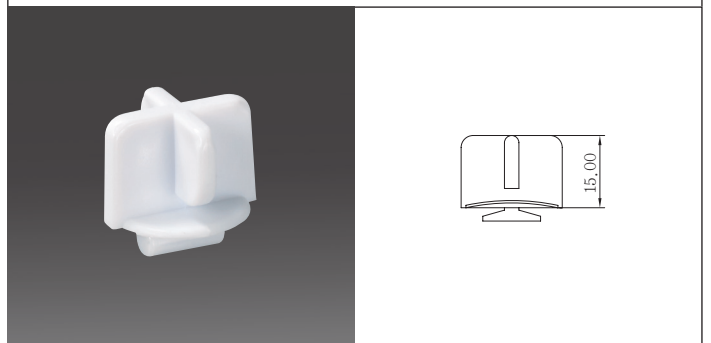
DR-6004

방등고리



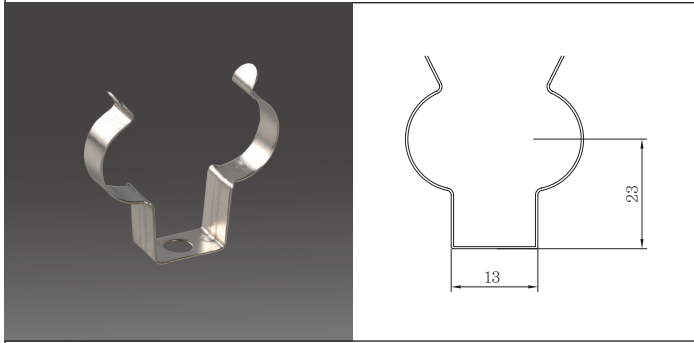
DR-6005

고무발



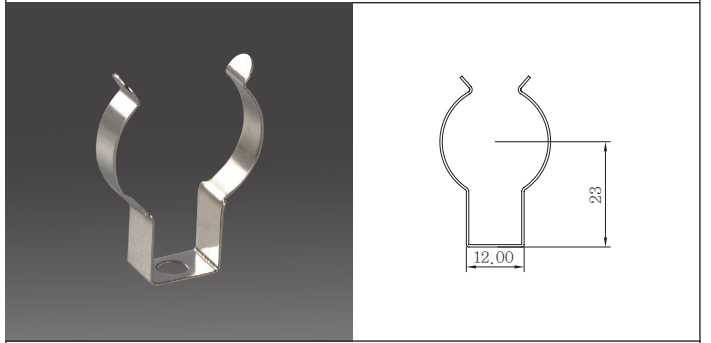
DR-6006

36W,55W 램프고리 (스텐)



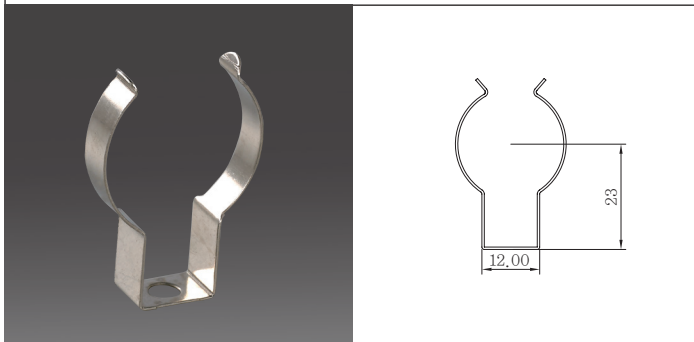
DR-6007

32W 램프고리



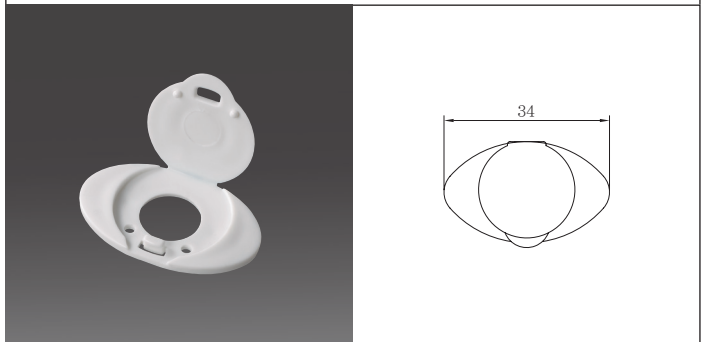
DR-6008

40W 램프고리



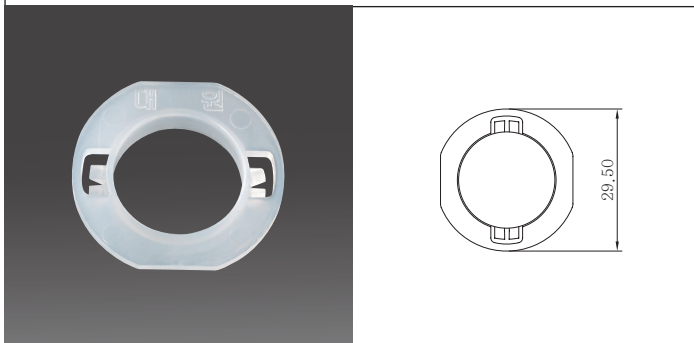
DR-6009

비스카바



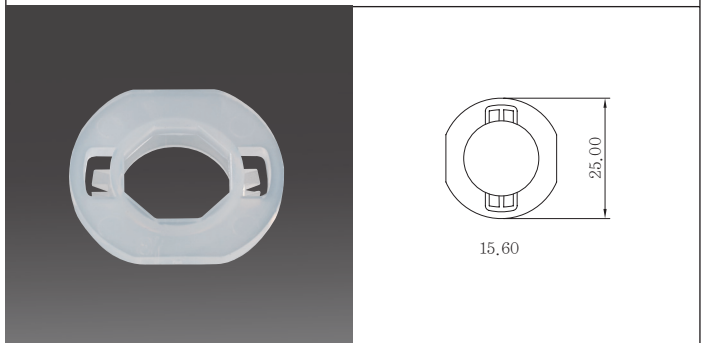
DR-6010

전원바킹 (22Ø)

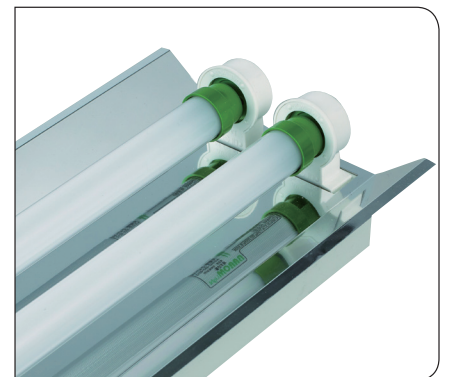


DR-6011

전원바킹 (17Ø)



DR-6012





제 2공장 전경



제1공장 프레스 현장



제2공장 사출 현장



**주식회사 대원전기**  
DAEWON ELECTRIC CO., LTD.

경기도 부천시 오정구  
삼작로 154번길 11 (내동 135-6)  
TEL. (032)677-6363(代), 677-6220~2  
FAX. (032)677-7373  
[www.e-daewon.co.kr](http://www.e-daewon.co.kr)

대원 카다로그 시리즈 ⑧  
DAEWON Catalog Series ⑧  
2019년 4월 발행